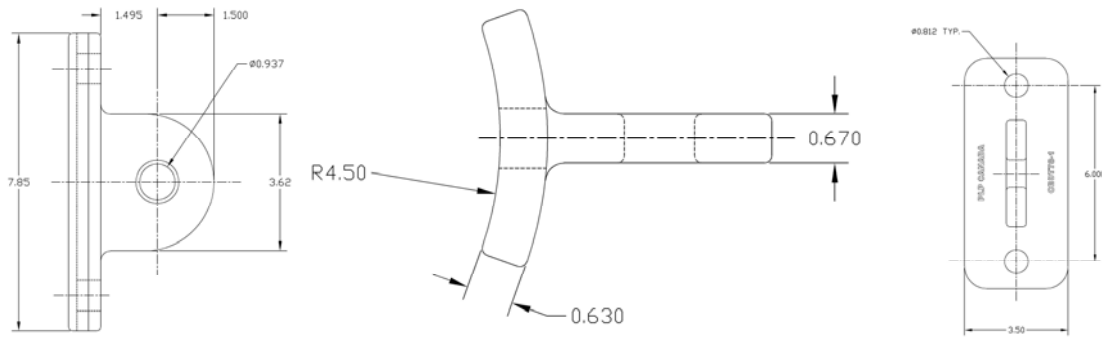




Transmission

Curved Base Dead End Tee



Curved base dead end tees are used to attach cables to the pole, crossarm or used as a cross brace tensioning point.

Made from High Strength Galvanized Steel.

Rated Strength 60,000 LBS

Charpy V Notch tested to 20 Jules @ Minus 20C

Catalogue number CBDT78-1

Weight 6 LBS