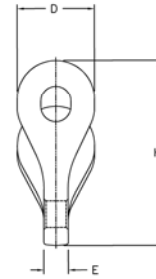
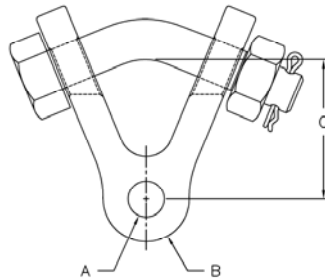




## Transmission

## Y - Clevis Eye



Preformed Line Products Y - Clevis Eyes are used primarily to attach clamps to Tower Pads and Yoke Plates. All Y-Clevis Eyes are manufactured to meet CSA-C83 specifications for cold temperature applications and tested to 20 Jules at minus 20C

Body: Forged Galvanized Steel

Hardware: Galvanized steel

Cotter Pin: Stainless steel

| Catalogue Number | A     | Dim    | B   | Dim   | C    | Dim | D  | Dim  | E     | Dim   | H   | Dim | Bolt Dim | Strength LBS | Standard Package |
|------------------|-------|--------|-----|-------|------|-----|----|------|-------|-------|-----|-----|----------|--------------|------------------|
|                  | In    | mm     | In  | mm    | In   | mm  | In | mm   | IN    | mm    | IN  | mm  |          |              |                  |
| YC-5026C         | 0.688 | 17.475 | 1.6 | 40.64 | 2.65 | 67  | 2  | 50.8 | 0.64  | 15.24 | 4.8 | 122 | 3/4"     | 25,000       | 25               |
| YC-5207C         | 0.688 | 17.475 | 1.6 | 40.64 | 2.65 | 67  | 2  | 50.8 | 0.693 | 15.24 | 4.8 | 122 | 3/4"     | 25,000       | 25               |
| YC-5209C         | 0.813 | 17.475 | 1.6 | 40.64 | 2.65 | 67  | 2  | 50.8 | 1.1   | 27.94 | 4.8 | 122 | 3/4"     | 25,000       | 25               |
| YC-5211C         | 0.813 | 17.475 | 1.6 | 40.64 | 2.65 | 67  | 2  | 50.8 | 2.1   | 53.34 | 4.8 | 122 | 3/4"     | 25,000       | 25               |