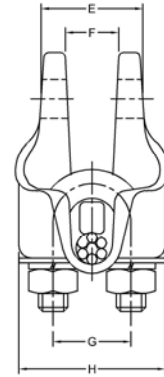
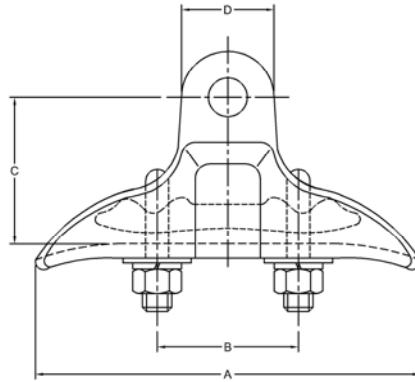




Transmission

Clamp Suspension Ductile Iron



Used in ground wire applications with galvanized steel cable with or without armor rods. All suspension clamps are come standard with Bolt, Nut and Cotter.

To add a Socket Eye add SE to the catalogue number

To add a Clevis Eye add CE to the catalogue number.

Body and Keeper: Galvanized Ductile Iron

U-Bolt and Nut: Galvanized Steel

Spring Washer: Stainless Steel

Catalogue Number	Cable Range	Dimensions MM								Standard Package
		A	B	C	D	E	F	G	H	
SC-6.0-12.5MM_BNK	6-12.5 MM	145	58	51	38	49	21	32	56	10
SC-12.5-18MM_BNK	12.5-18 MM	145	58	60	40	49	21	32	56	10